

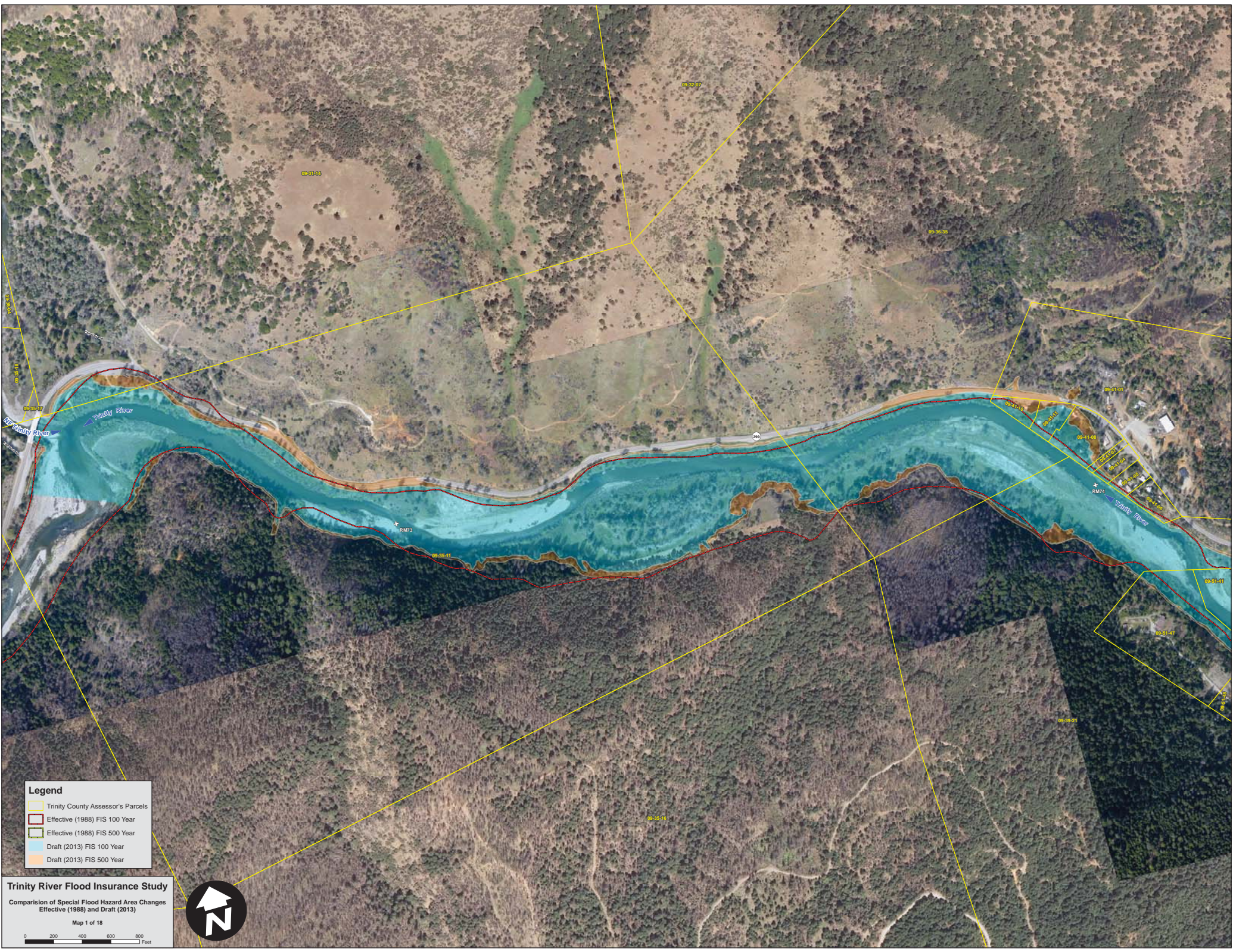


Legend
Draft (2013) FIS 100 Year

Trinity River Flood Insurance Study
Comparison of Special Flood Hazard Area Changes
Effective (1988) and Draft (2013)



Index Map
0 1 2 Miles

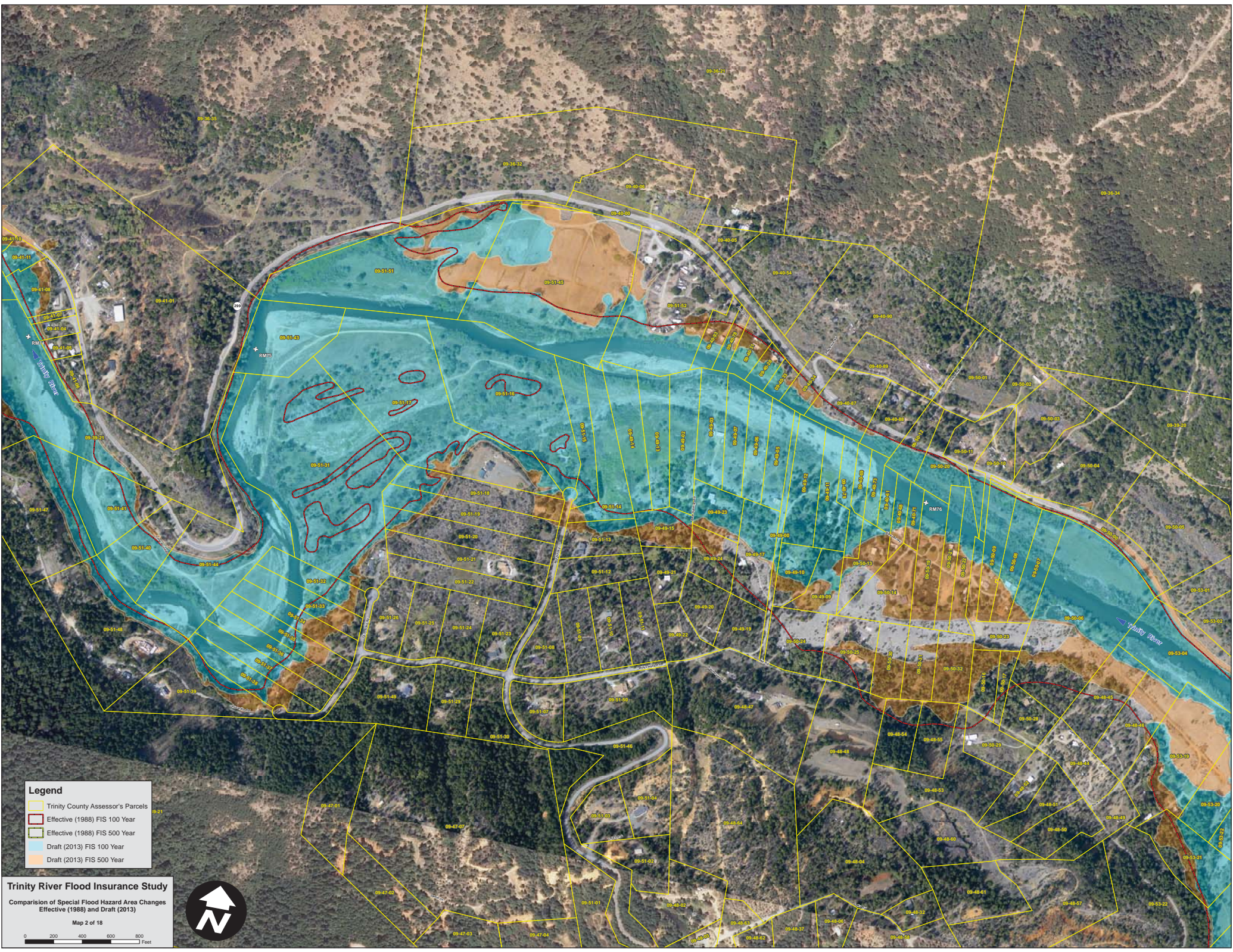


- Legend**
- Trinity County Assessor's Parcels
 - Effective (1988) FIS 100 Year
 - Effective (1988) FIS 500 Year
 - Draft (2013) FIS 100 Year
 - Draft (2013) FIS 500 Year

Trinity River Flood Insurance Study
Comparison of Special Flood Hazard Area Changes
Effective (1988) and Draft (2013)

Map 1 of 18

0 200 400 600 800 Feet

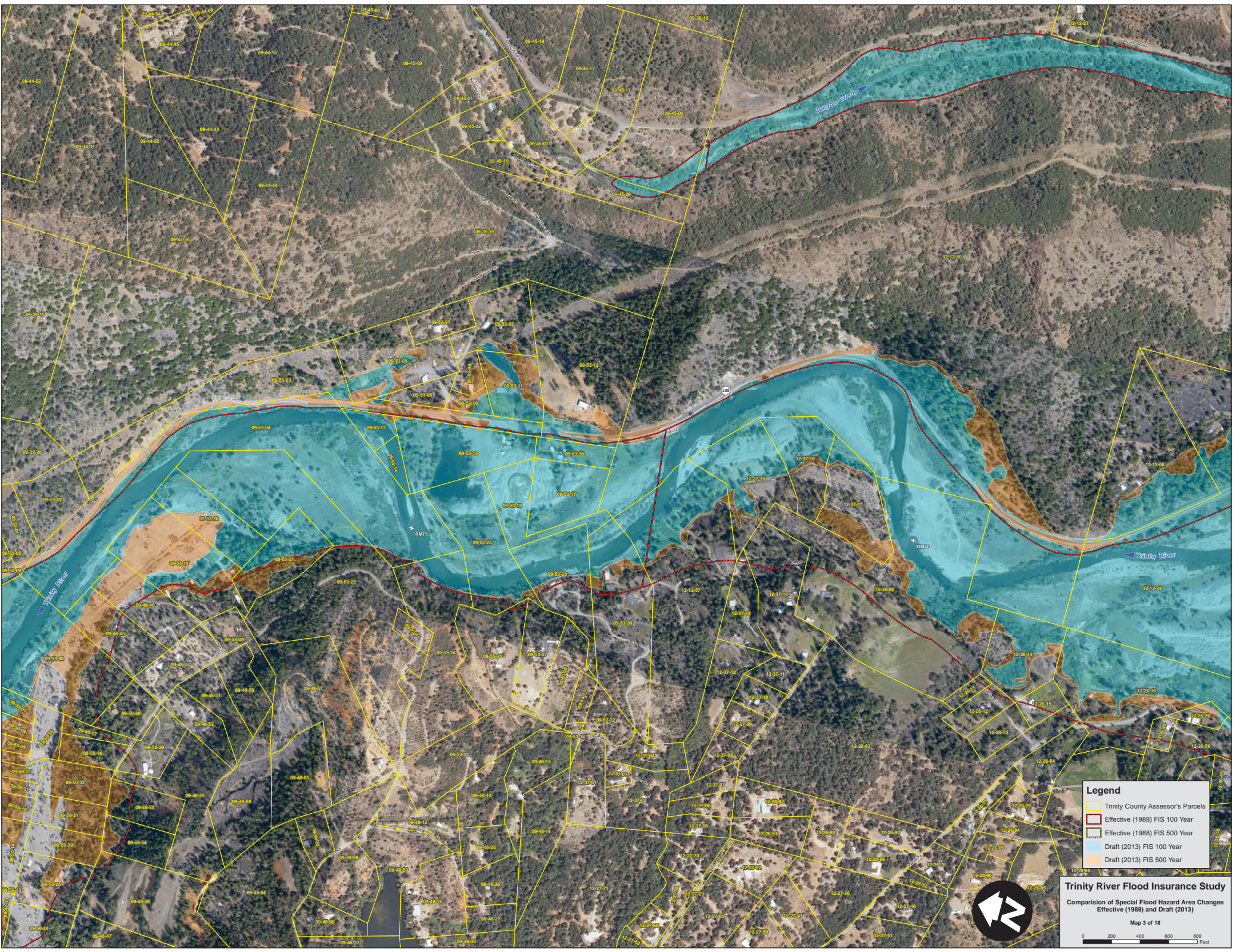


Legend

- Trinity County Assessor's Parcels
- Effective (1988) FIS 100 Year
- Effective (1988) FIS 500 Year
- Draft (2013) FIS 100 Year
- Draft (2013) FIS 500 Year

Trinity River Flood Insurance Study
 Comparison of Special Flood Hazard Area Changes
 Effective (1988) and Draft (2013)





Legend

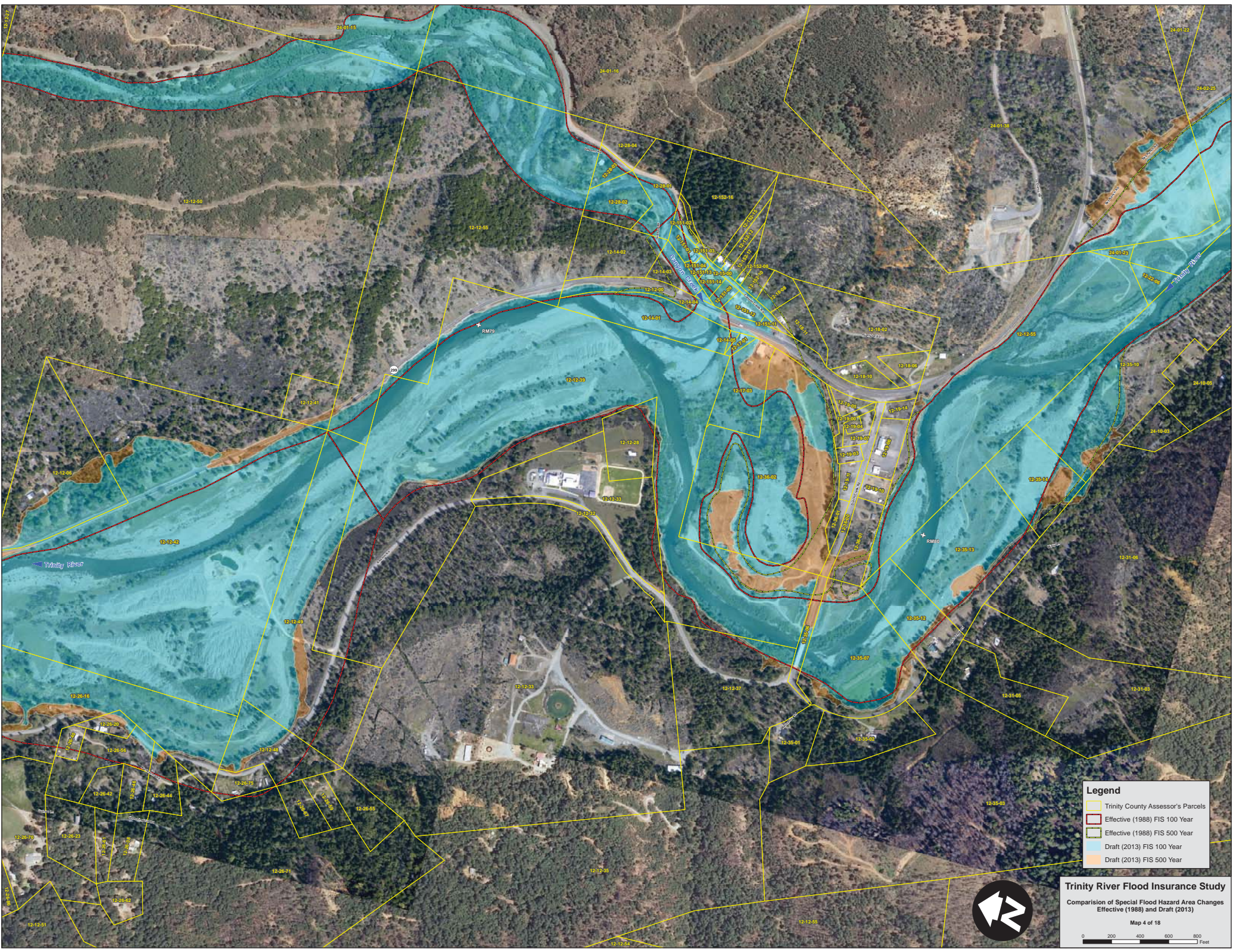
- Trinity County Assessor's Parcels
- Effective (1988) FIS 100 Year
- Effective (1988) FIS 500 Year
- Draft (2013) FIS 100 Year
- Draft (2013) FIS 500 Year

Trinity River Flood Insurance Study
 Comparison of Special Flood Hazard Area Effective (1988) and Draft (2013)

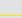

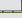
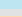

Map 3 of 18

0 200 400 600 800 Feet



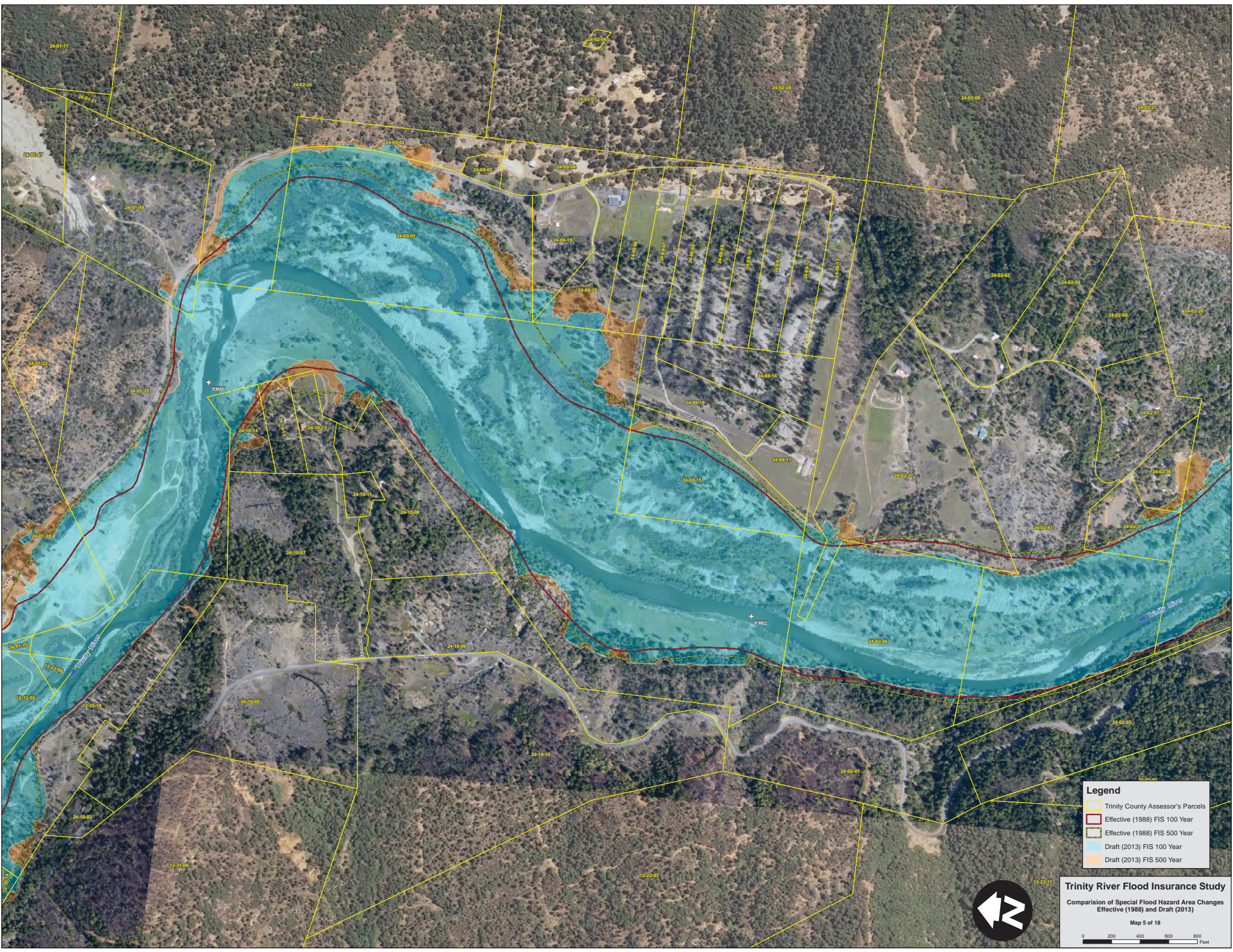


Legend

-  Trinity County Assessor's Parcels
-  Effective (1988) FIS 100 Year
-  Effective (1988) FIS 500 Year
-  Draft (2013) FIS 100 Year
-  Draft (2013) FIS 500 Year

Trinity River Flood Insurance Study
 Comparison of Special Flood Hazard Area Changes
 Effective (1988) and Draft (2013)



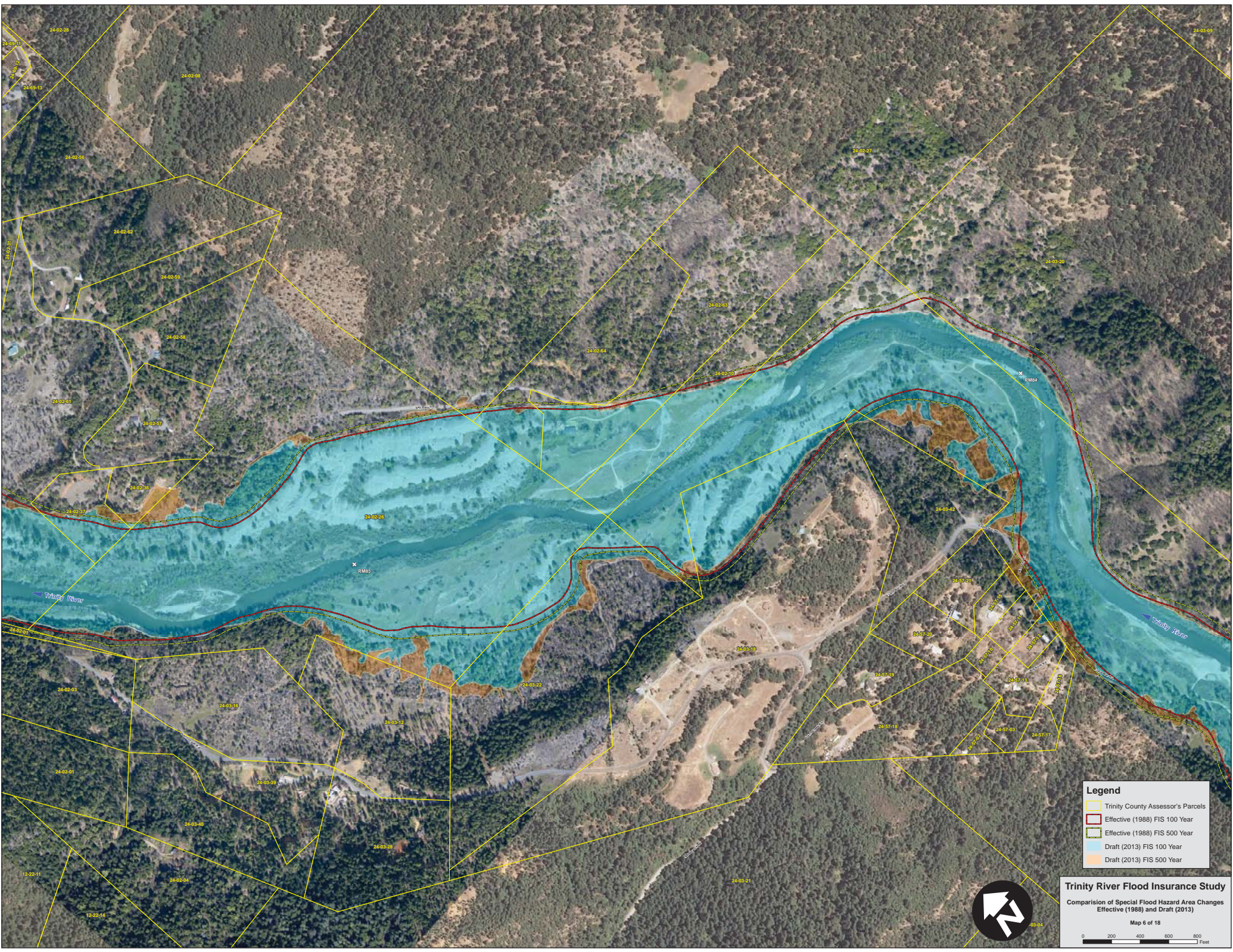


- Legend**
- Trinity County Assessor's Parcels
 - Effective (1988) FIS 100 Year
 - Effective (1988) FIS 500 Year
 - Draft (2013) FIS 100 Year
 - Draft (2013) FIS 500 Year



Trinity River Flood Insurance Study
 Comparison of Special Flood Hazard Area Changes
 Effective (1988) and Draft (2013)

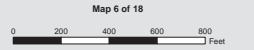


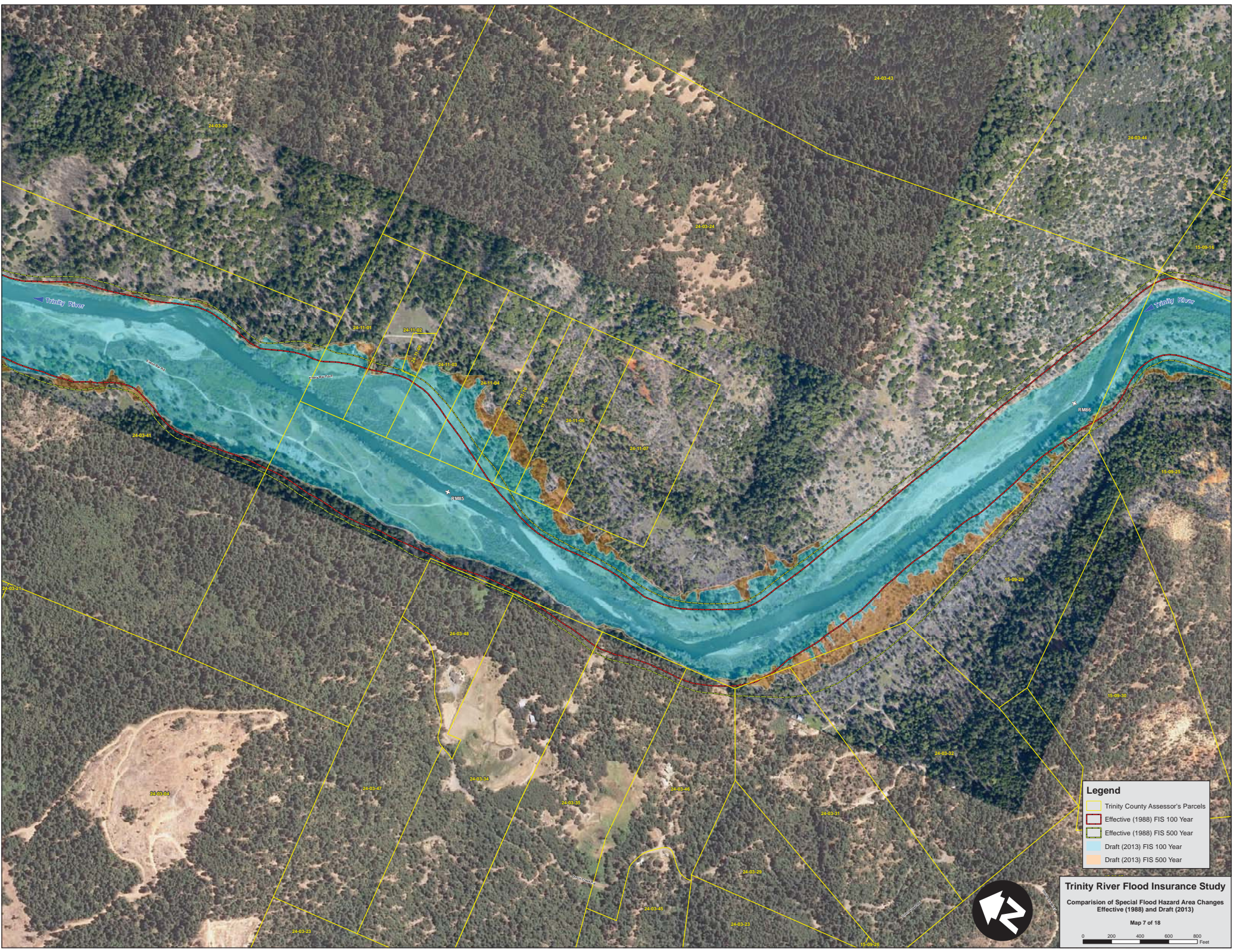


Legend

- Trinity County Assessor's Parcels
- Effective (1988) FIS 100 Year
- Effective (1988) FIS 500 Year
- Draft (2013) FIS 100 Year
- Draft (2013) FIS 500 Year

Trinity River Flood Insurance Study
 Comparison of Special Flood Hazard Area Changes
 Effective (1988) and Draft (2013)





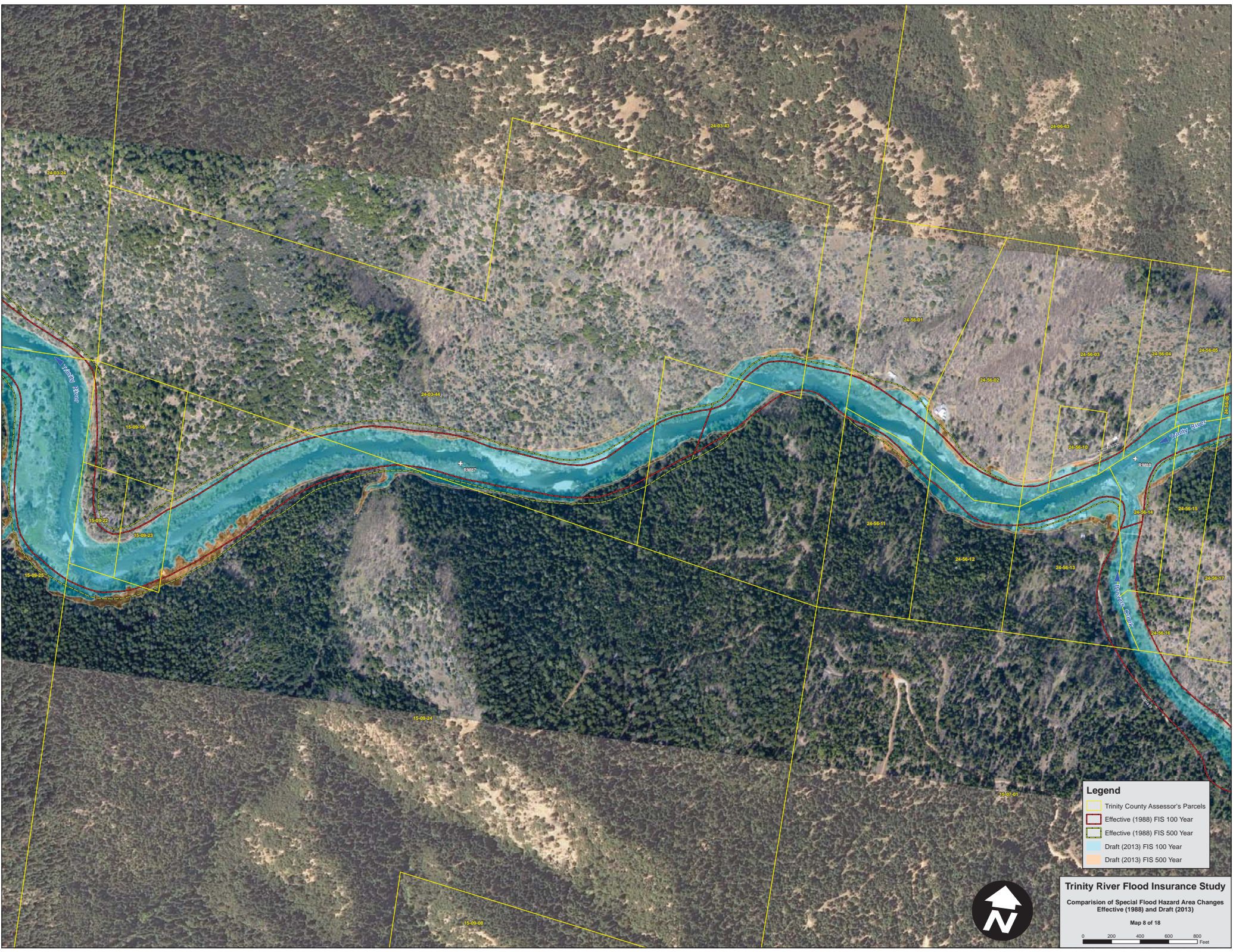
Legend

- Trinity County Assessor's Parcels
- Effective (1988) FIS 100 Year
- Effective (1988) FIS 500 Year
- Draft (2013) FIS 100 Year
- Draft (2013) FIS 500 Year

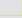
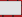
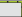


Trinity River Flood Insurance Study
Comparison of Special Flood Hazard Area Changes
Effective (1988) and Draft (2013)

Map 7 of 18

0 200 400 600 800 Feet



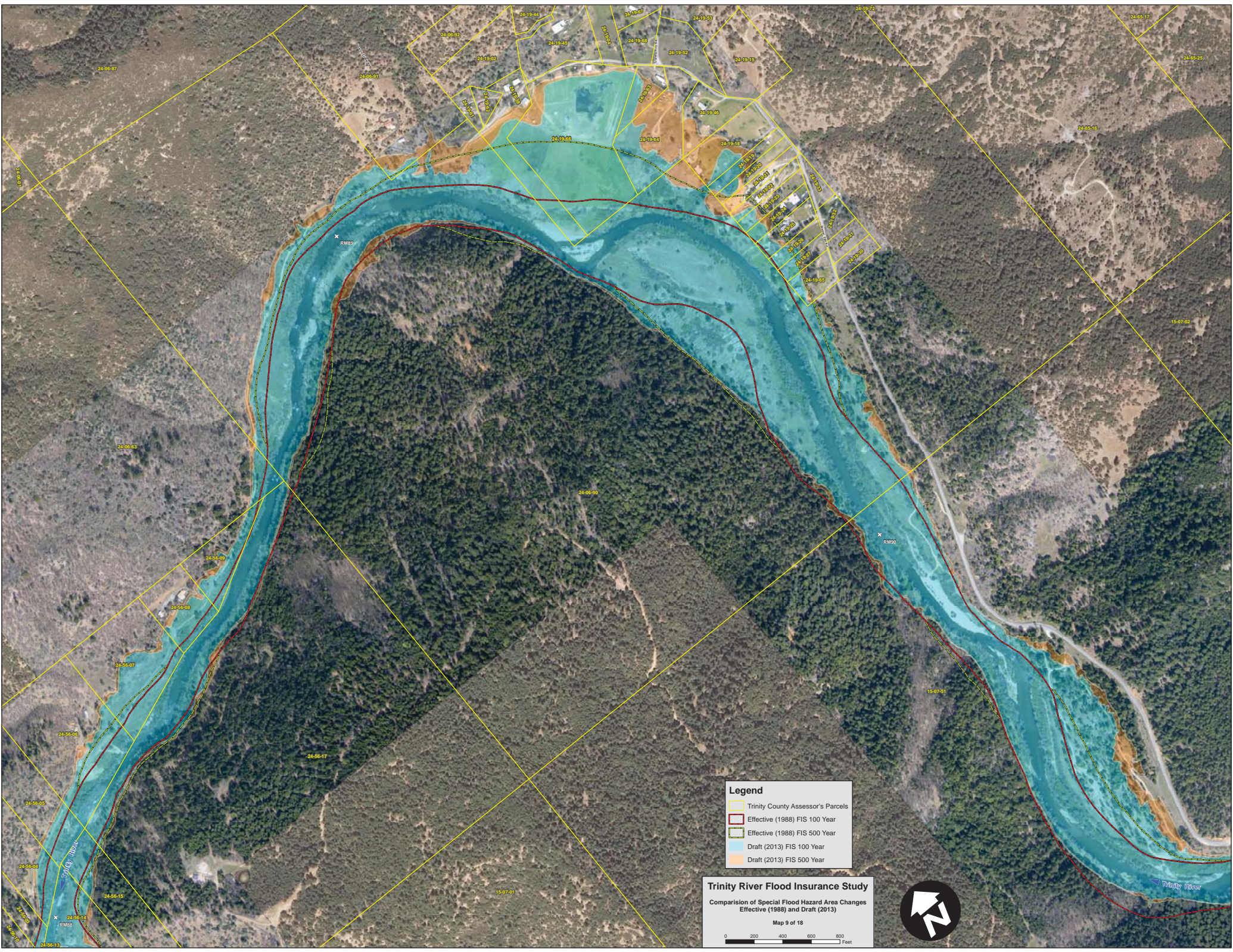
Legend

-  Trinity County Assessor's Parcels
-  Effective (1988) FIS 100 Year
-  Effective (1988) FIS 500 Year
-  Draft (2013) FIS 100 Year
-  Draft (2013) FIS 500 Year



Trinity River Flood Insurance Study
 Comparison of Special Flood Hazard Area Changes
 Effective (1988) and Draft (2013)

Map 8 of 18
 0 200 400 600 800 Feet



- Legend**
- Trinity County Assessor's Parcels
 - Effective (1988) FIS 100 Year
 - Effective (1988) FIS 500 Year
 - Draft (2013) FIS 100 Year
 - Draft (2013) FIS 500 Year

Trinity River Flood Insurance Study
 Comparison of Special Flood Hazard Area Changes
 Effective (1988) and Draft (2013)

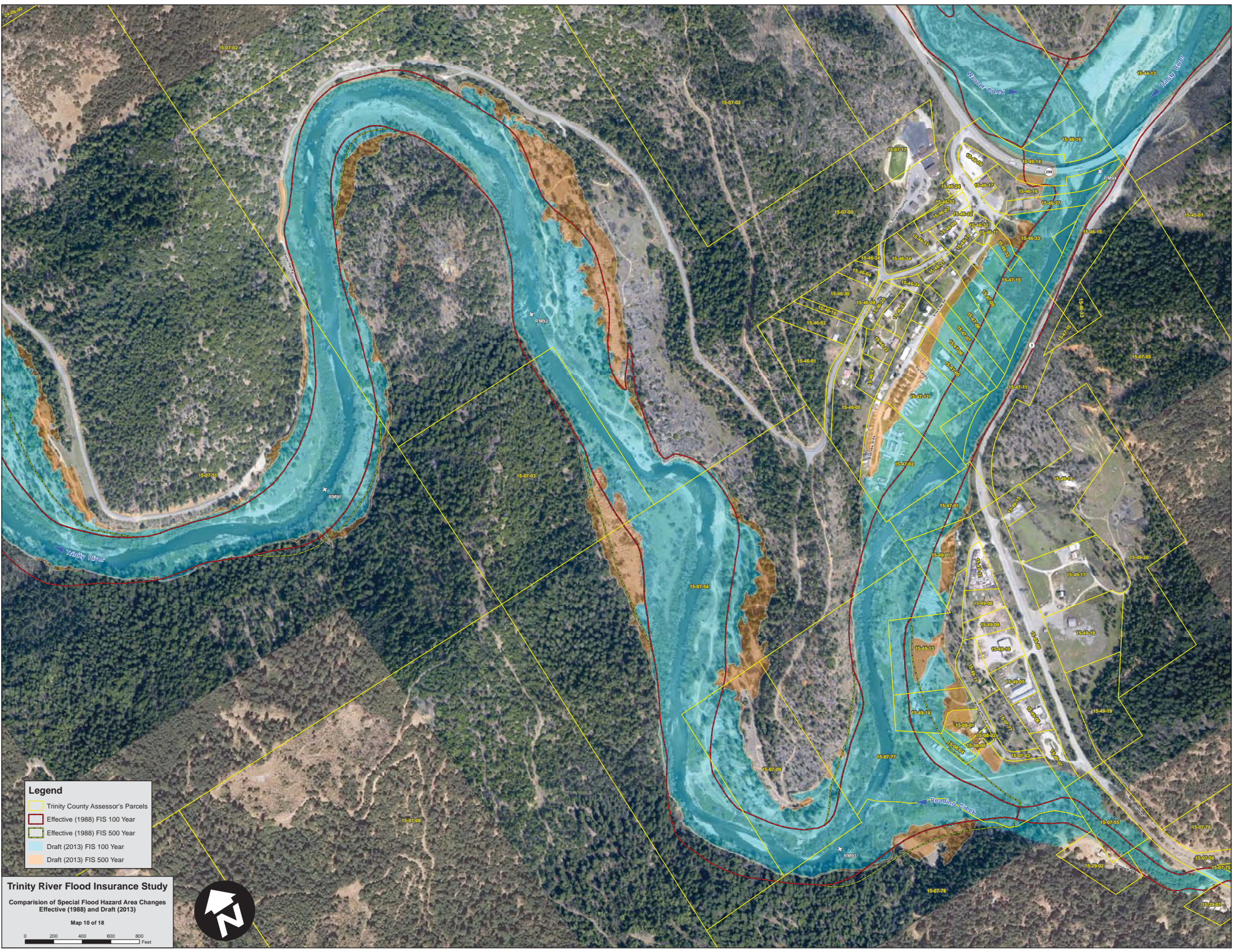


Trinity River
 x
 RM38

x
 RM39

x
 RM20

Trinity River



Legend

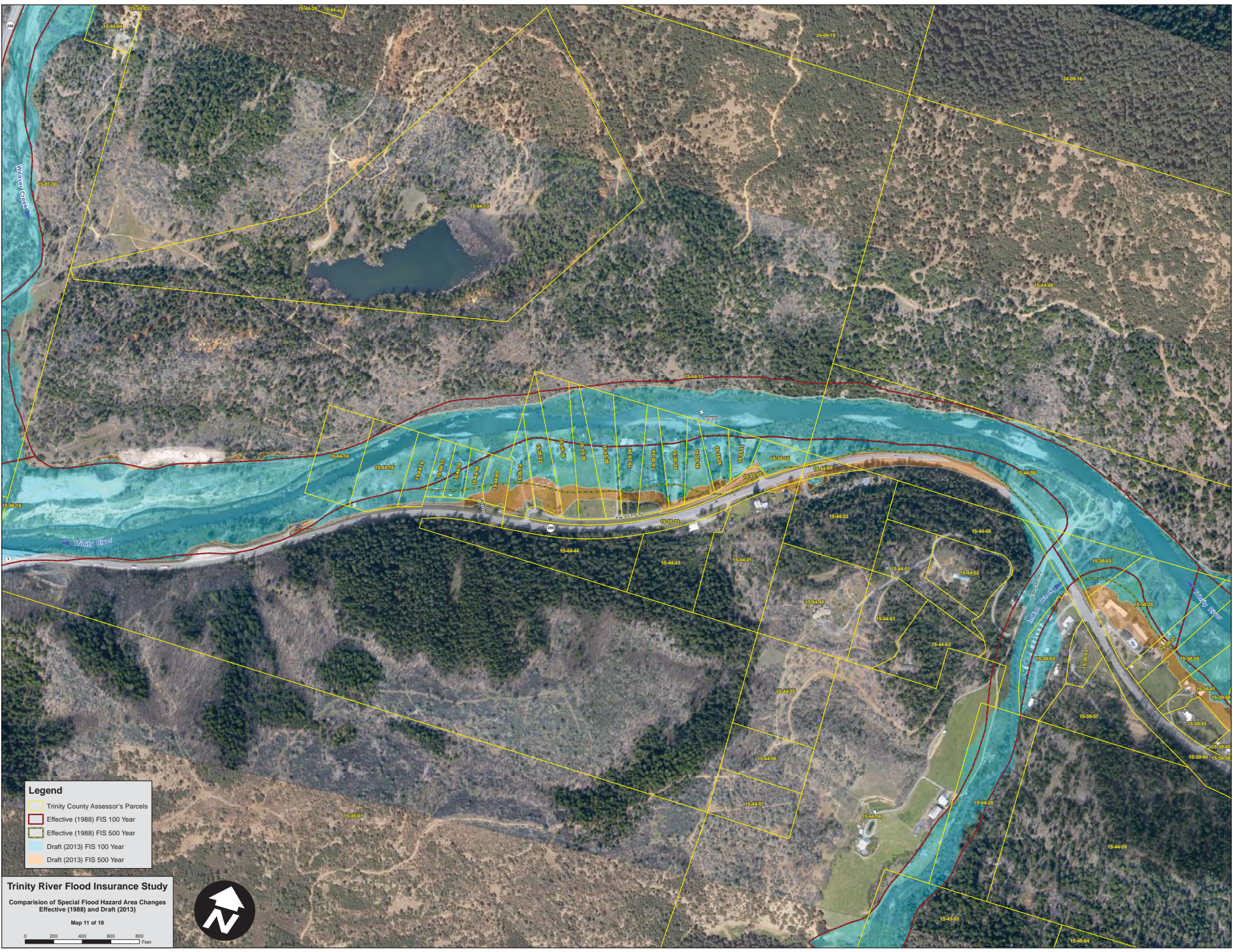
- Trinity County Assessor's Parcels
- Effective (1988) FIS 100 Year
- Effective (1988) FIS 500 Year
- Draft (2013) FIS 100 Year
- Draft (2013) FIS 500 Year

Trinity River Flood Insurance Study
 Comparison of Special Flood Hazard Area Changes
 Effective (1988) and Draft (2013)

Map 10 of 18

0 200 400 600 800 Feet





Legend

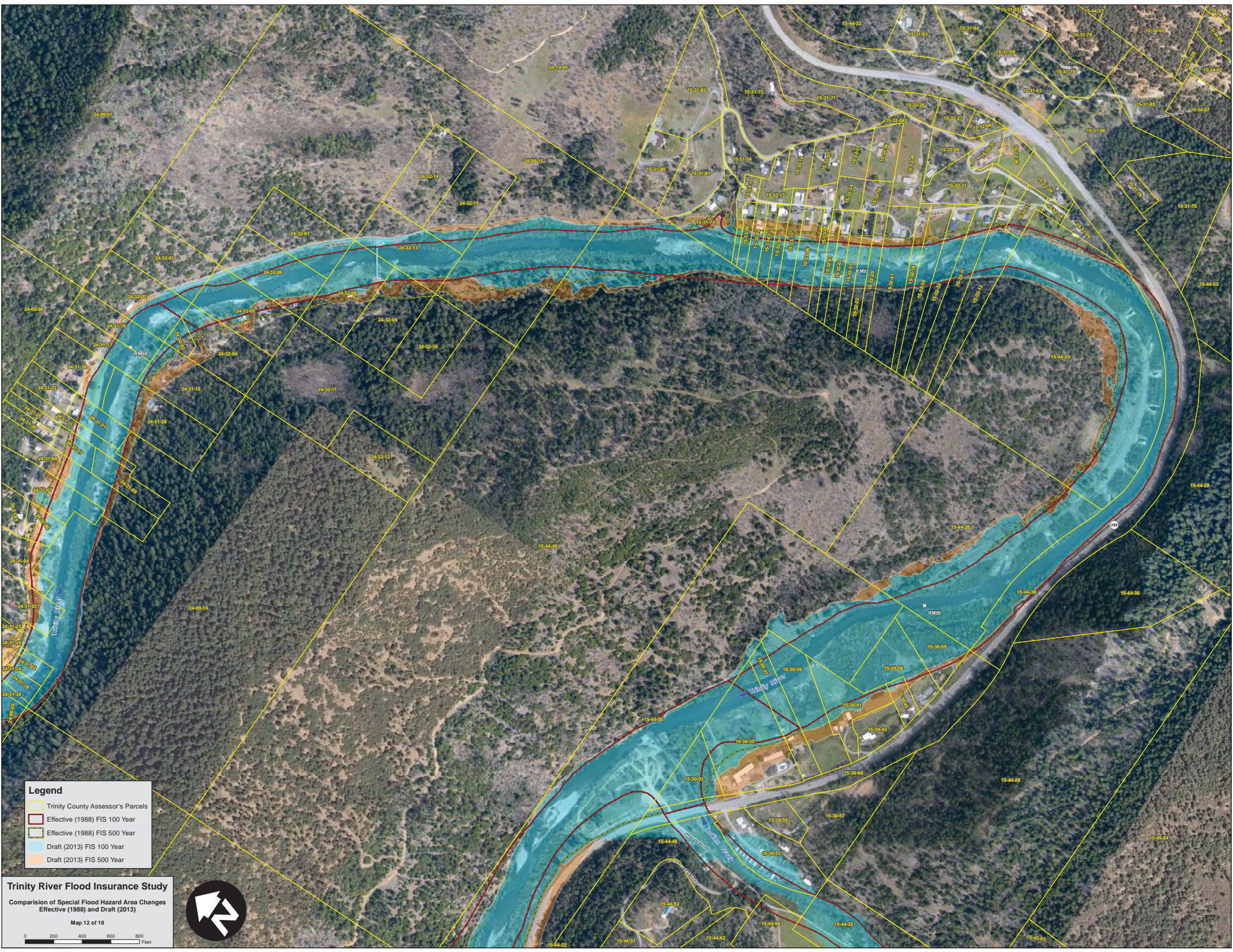
- Trinity County Assessor's Parcels
- Effective (1988) FIS 100 Year
- Effective (1988) FIS 500 Year
- Draft (2013) FIS 100 Year
- Draft (2013) FIS 500 Year

Trinity River Flood Insurance Study
 Comparison of Special Flood Hazard Area Changes
 Effective (1988) and Draft (2013)

Map 11 of 18

0 200 400 600 800 Feet





- Legend**
- Trinity County Assessor's Parcels
 - Effective (1988) FIS 100 Year
 - Effective (1988) FIS 500 Year
 - Draft (2013) FIS 100 Year
 - Draft (2013) FIS 500 Year

Trinity River Flood Insurance Study
 Comparison of Special Flood Hazard Area Changes
 Effective (1988) and Draft (2013)



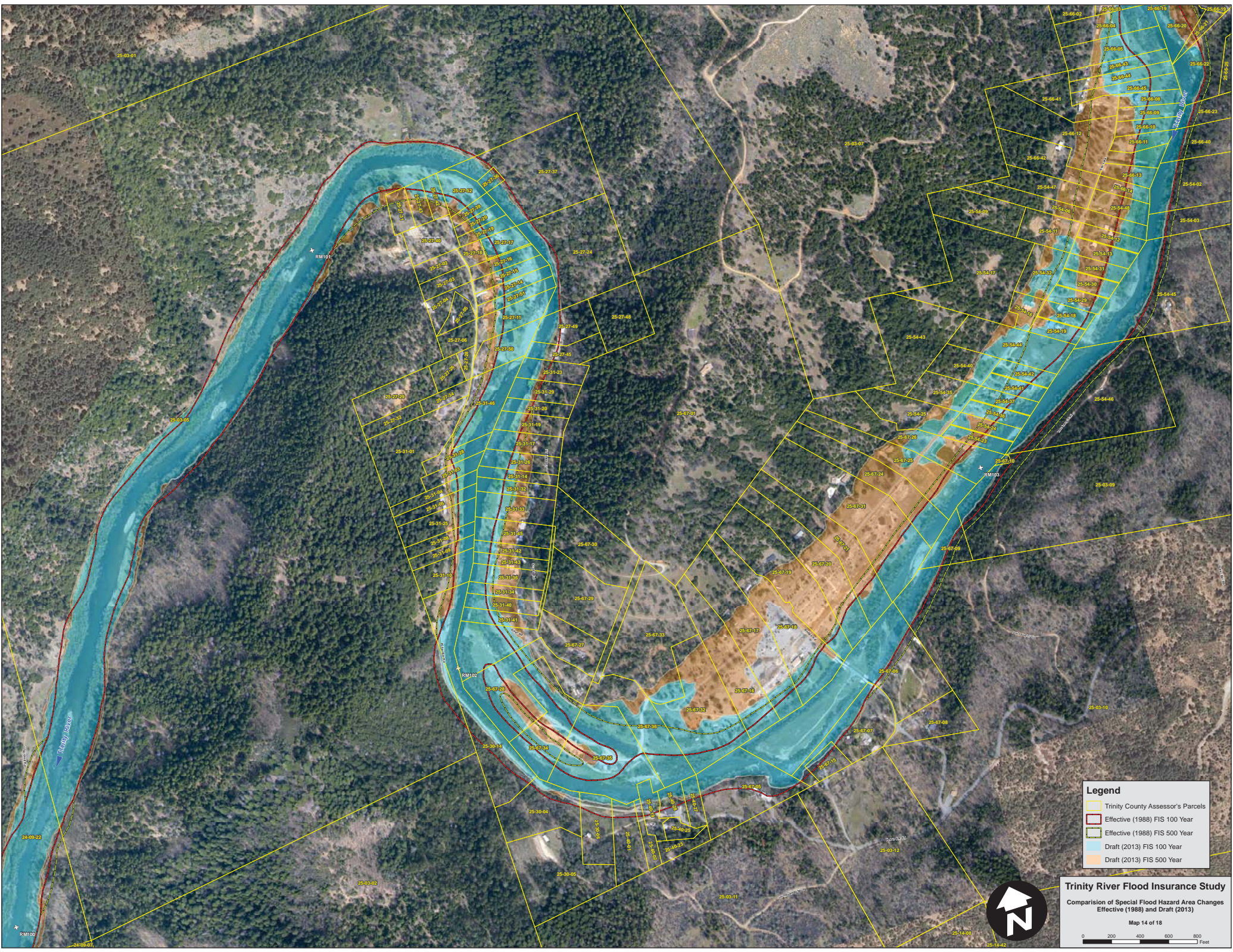
Map 12 of 18
 0 200 400 600 800 Feet



Legend

- Trinity County Assessor's Parcels
- Effective (1988) FIS 100 Year
- Effective (1988) FIS 500 Year
- Draft (2013) FIS 100 Year
- Draft (2013) FIS 500 Year

Trinity River Flood Insurance Study
 Comparison of Special Flood Hazard Area Changes
 Effective (1988) and Draft (2013)
 Map 13 of 18

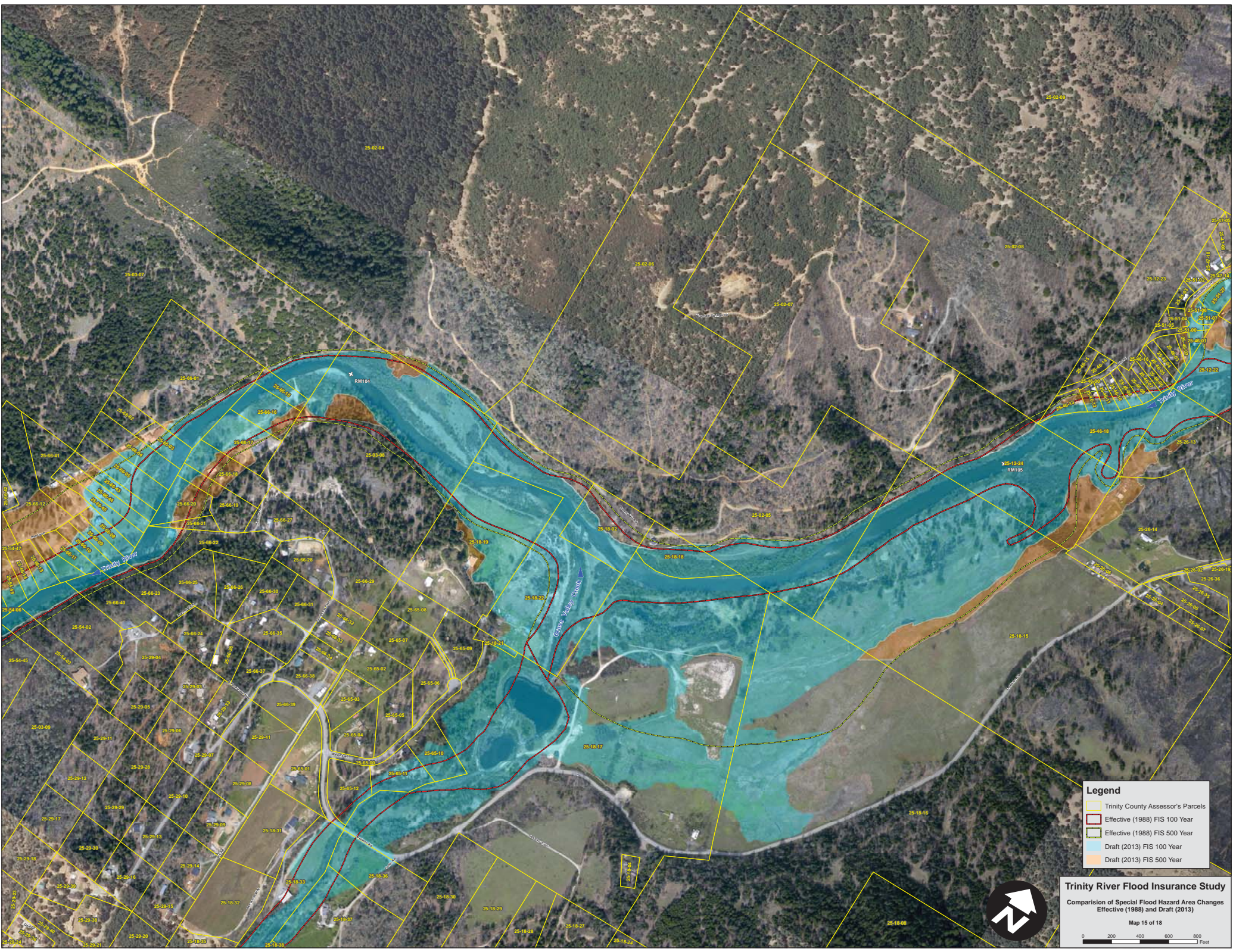


Legend

- Trinity County Assessor's Parcels
- Effective (1988) FIS 100 Year
- Effective (1988) FIS 500 Year
- Draft (2013) FIS 100 Year
- Draft (2013) FIS 500 Year

Trinity River Flood Insurance Study
 Comparison of Special Flood Hazard Area Changes
 Effective (1988) and Draft (2013)



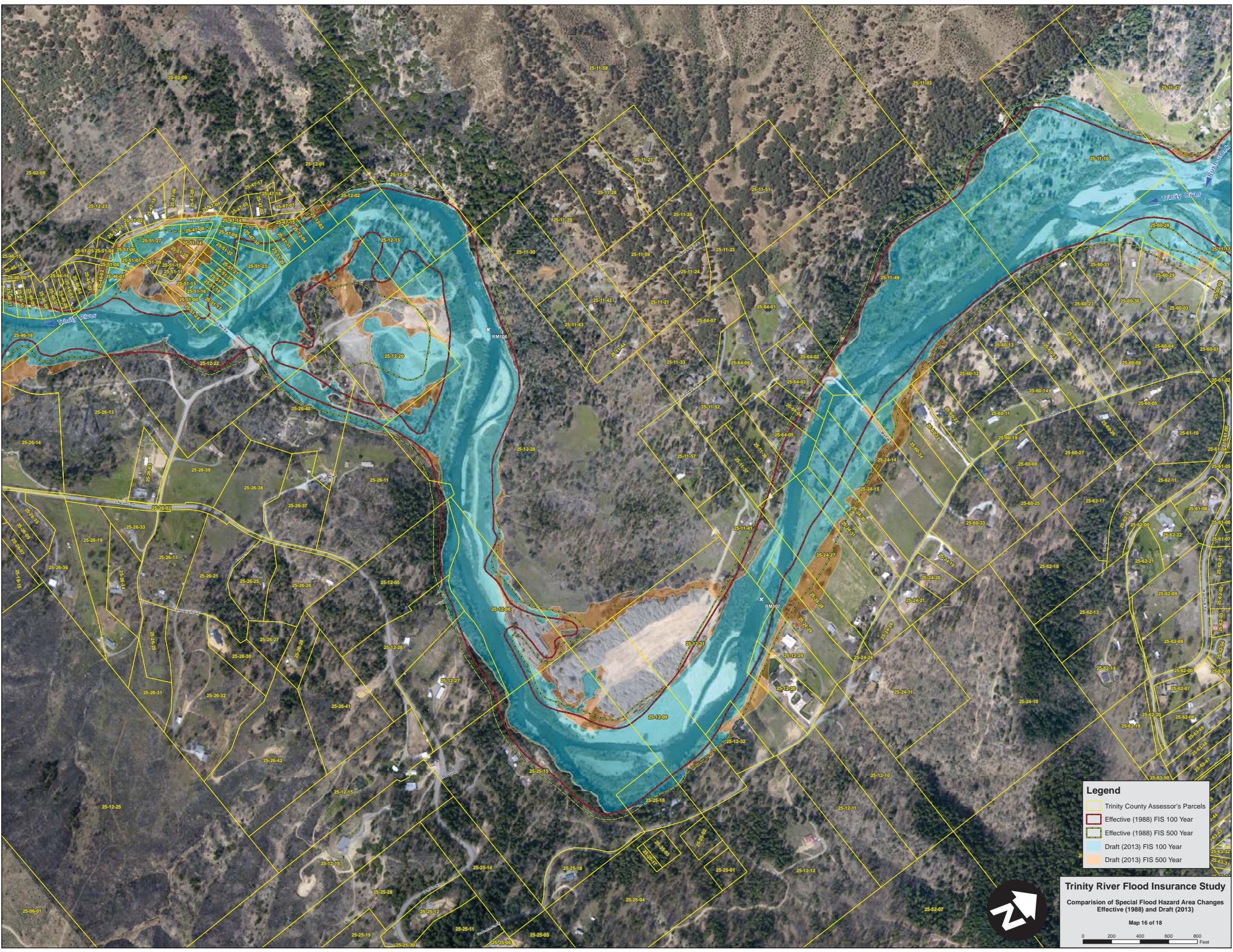


Legend

- Trinity County Assessor's Parcels
- Effective (1988) FIS 100 Year
- Effective (1988) FIS 500 Year
- Draft (2013) FIS 100 Year
- Draft (2013) FIS 500 Year

Trinity River Flood Insurance Study
 Comparison of Special Flood Hazard Areas
 Effective (1988) and Draft (2013)





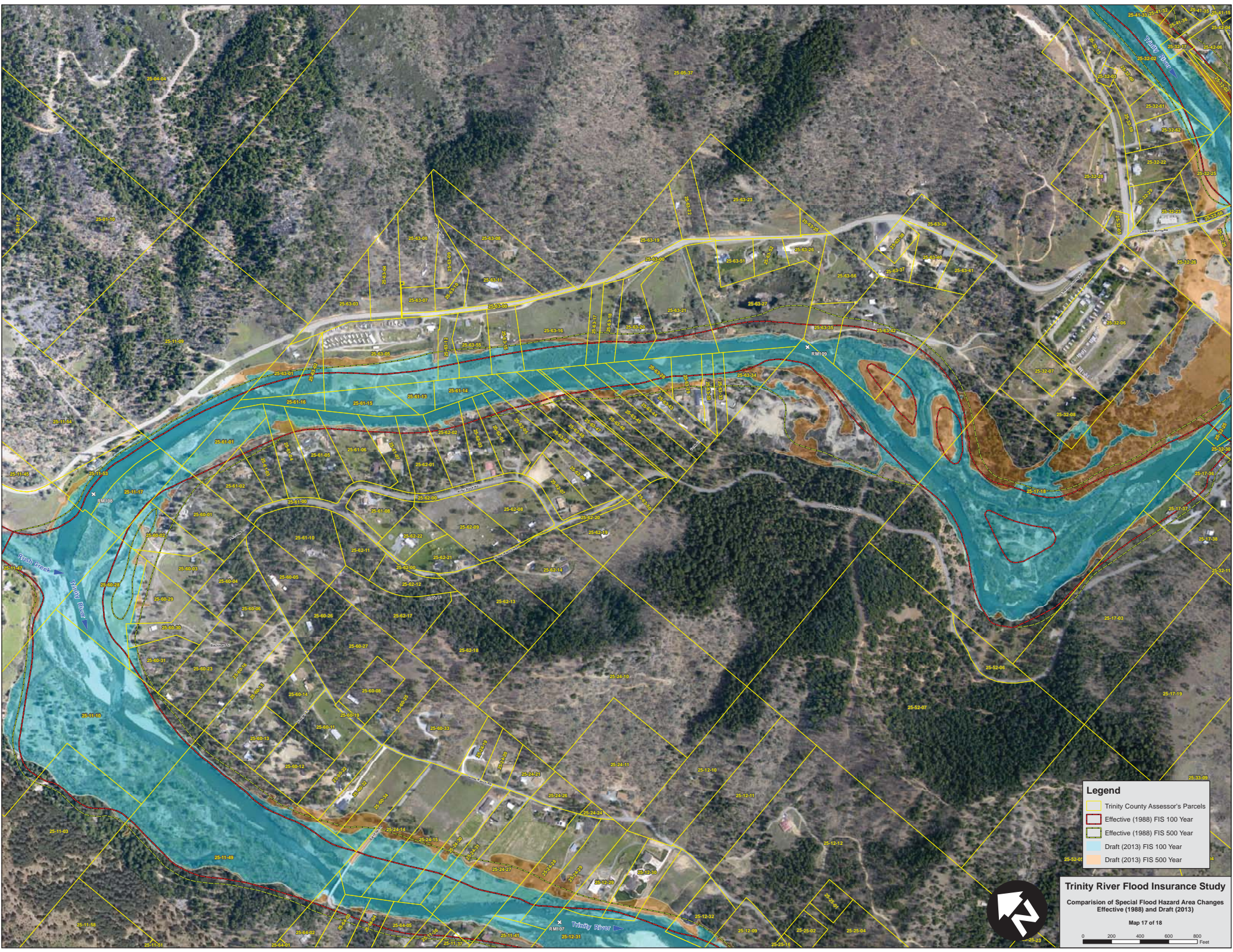
Legend

- Trinity County Assessor's Parcels
- Effective (1988) FIS 100 Year
- Effective (1988) FIS 500 Year
- Draft (2013) FIS 100 Year
- Draft (2013) FIS 500 Year

Trinity River Flood Insurance Study
 Comparison of Special Flood Hazard Area Changes
 Effective (1988) and Draft (2013)

Map 16 of 18

0 200 400 600 800 Feet



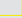

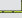
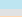

Legend

- Trinity County Assessor's Parcels
- Effective (1988) FIS 100 Year
- Effective (1988) FIS 500 Year
- Draft (2013) FIS 100 Year
- Draft (2013) FIS 500 Year

Trinity River Flood Insurance Study
Comparison of Special Flood Hazard Area Changes
Effective (1988) and Draft (2013)





- Legend**
-  Trinity County Assessor's Parcels
 -  Effective (1988) FIS 100 Year
 -  Effective (1988) FIS 500 Year
 -  Draft (2013) FIS 100 Year
 -  Draft (2013) FIS 500 Year

Trinity River Flood Insurance Study
 Comparison of Special Flood Hazard Area Changes
 Effective (1988) and Draft (2013)

