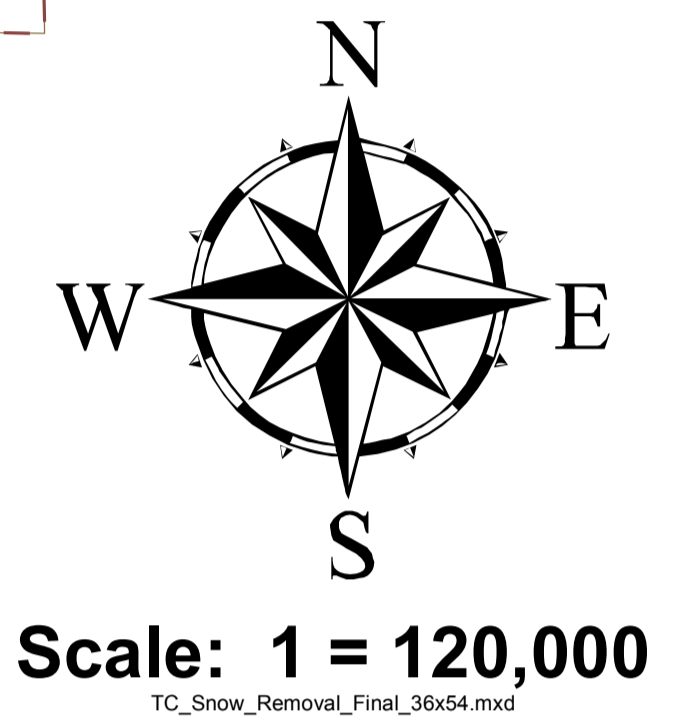
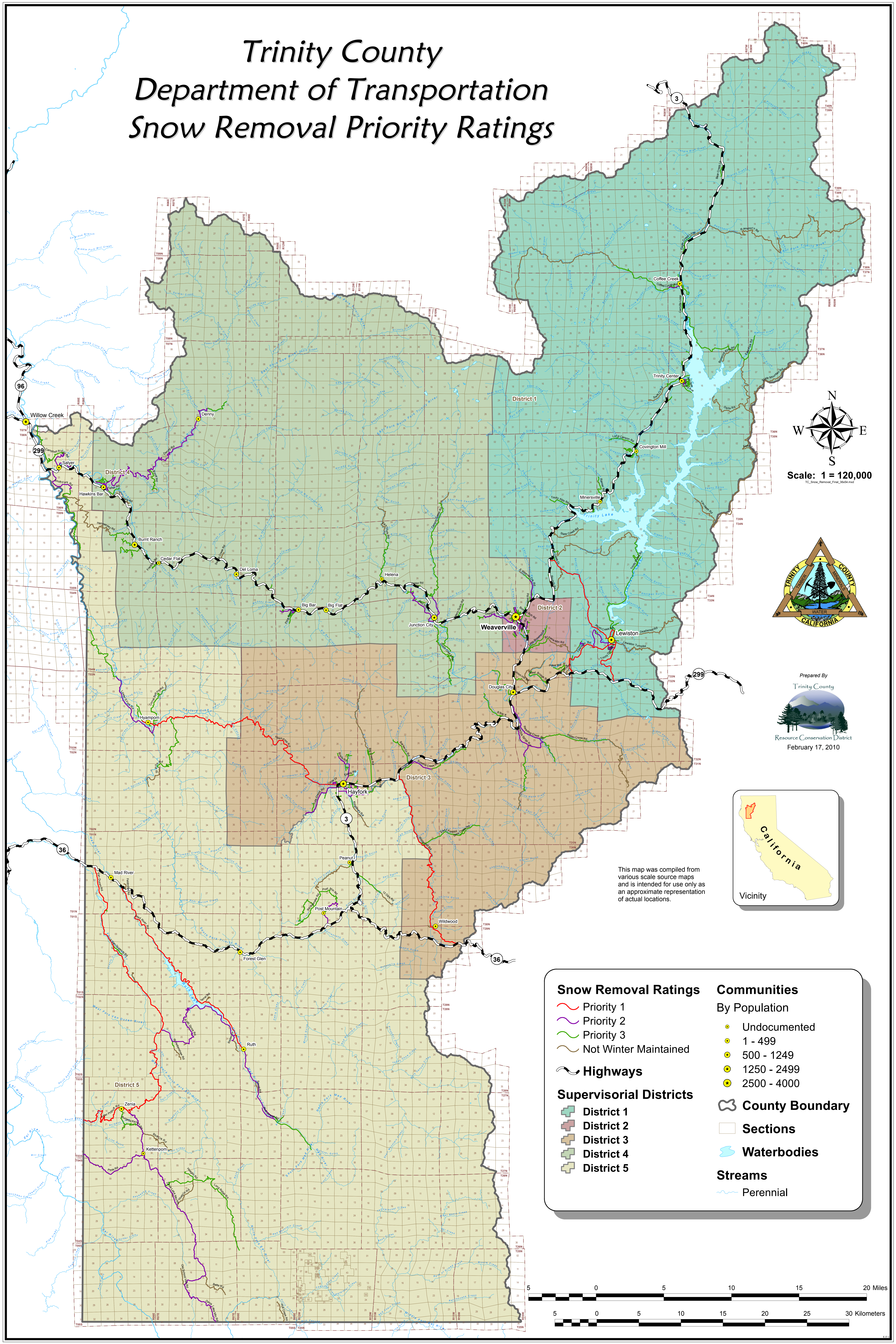


Trinity County Department of Transportation Snow Removal Priority Ratings



Prepared By
Trinity County
Resource Conservation District
February 17, 2010



This map was compiled from various scale source maps and is intended for use only as an approximate representation of actual locations.

<p>Snow Removal Ratings</p> <ul style="list-style-type: none"> — Priority 1 — Priority 2 — Priority 3 — Not Winter Maintained Highways <p>Supervisorial Districts</p> <ul style="list-style-type: none"> ■ District 1 ■ District 2 ■ District 3 ■ District 4 ■ District 5 	<p>Communities By Population</p> <ul style="list-style-type: none"> ● Undocumented ● 1 - 499 ● 500 - 1249 ● 1250 - 2499 ● 2500 - 4000 <p>County Boundary</p> <p>Sections</p> <p>Waterbodies</p> <p>Streams</p> <p>Perennial</p>
--	---

